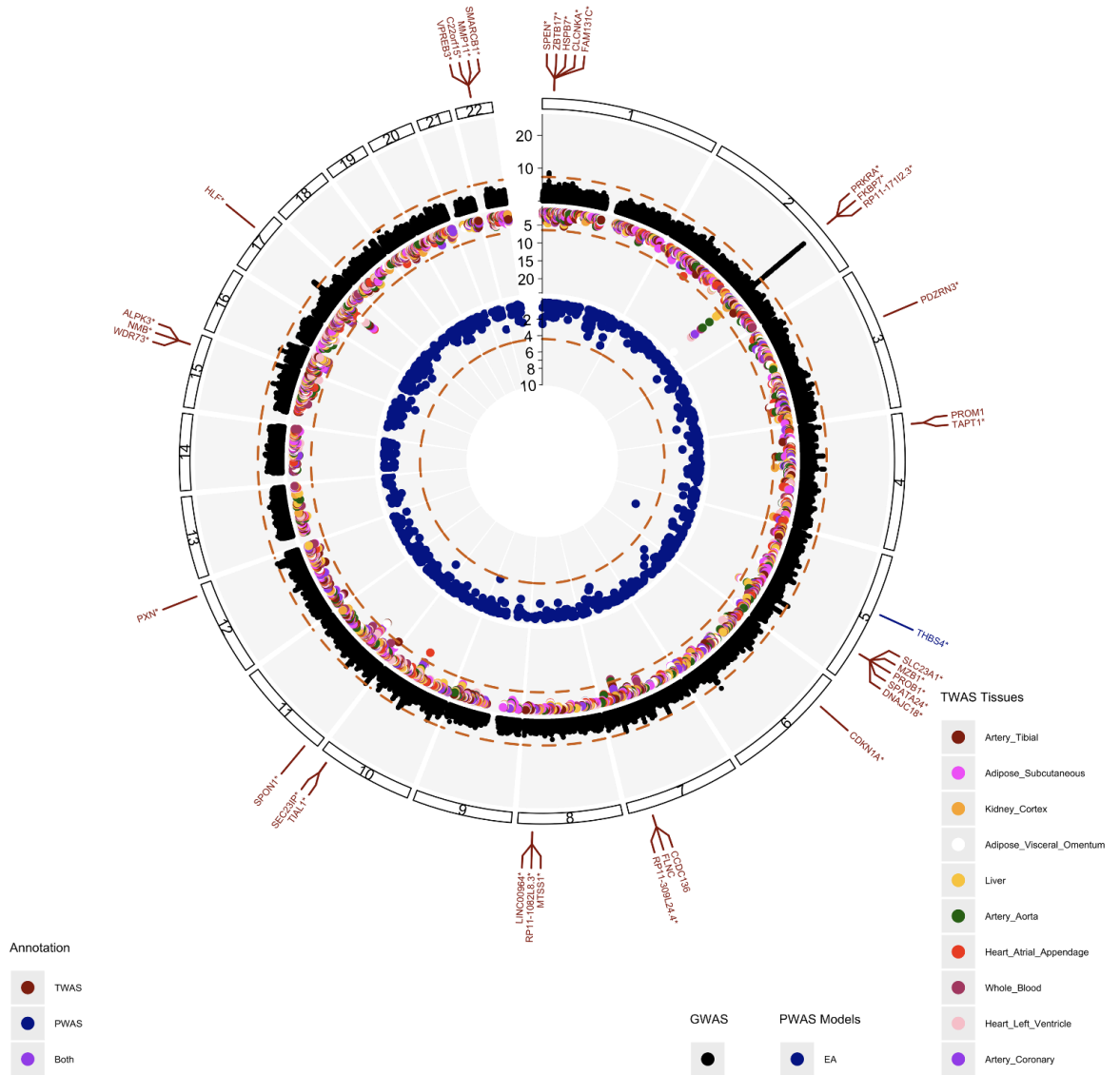


Supplemental Figures

Supplemental Figure 1: Genomic, Transcriptomic, and Proteomic Associations - Additional Phenotypes

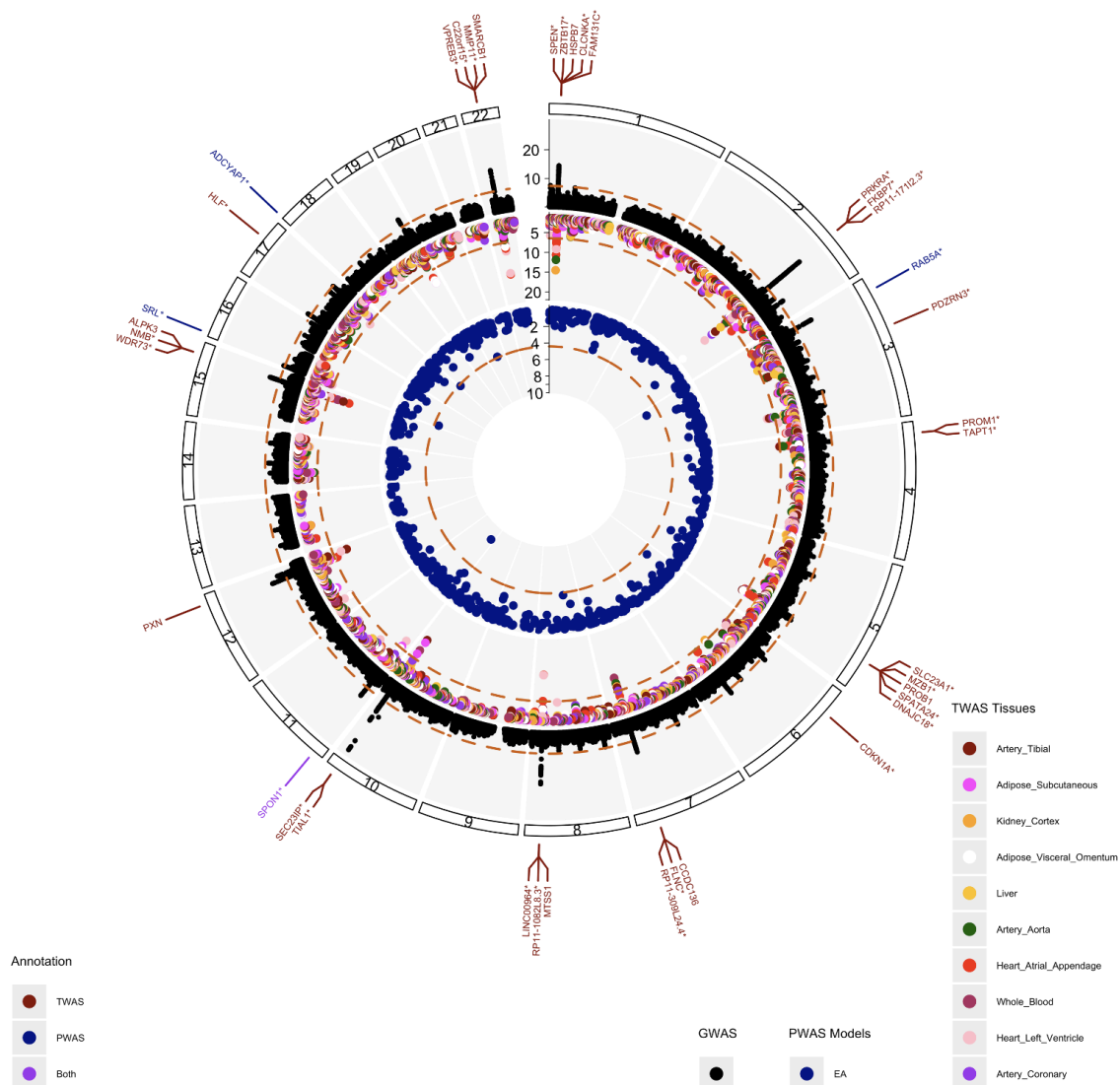
MRI – LV Mass

A



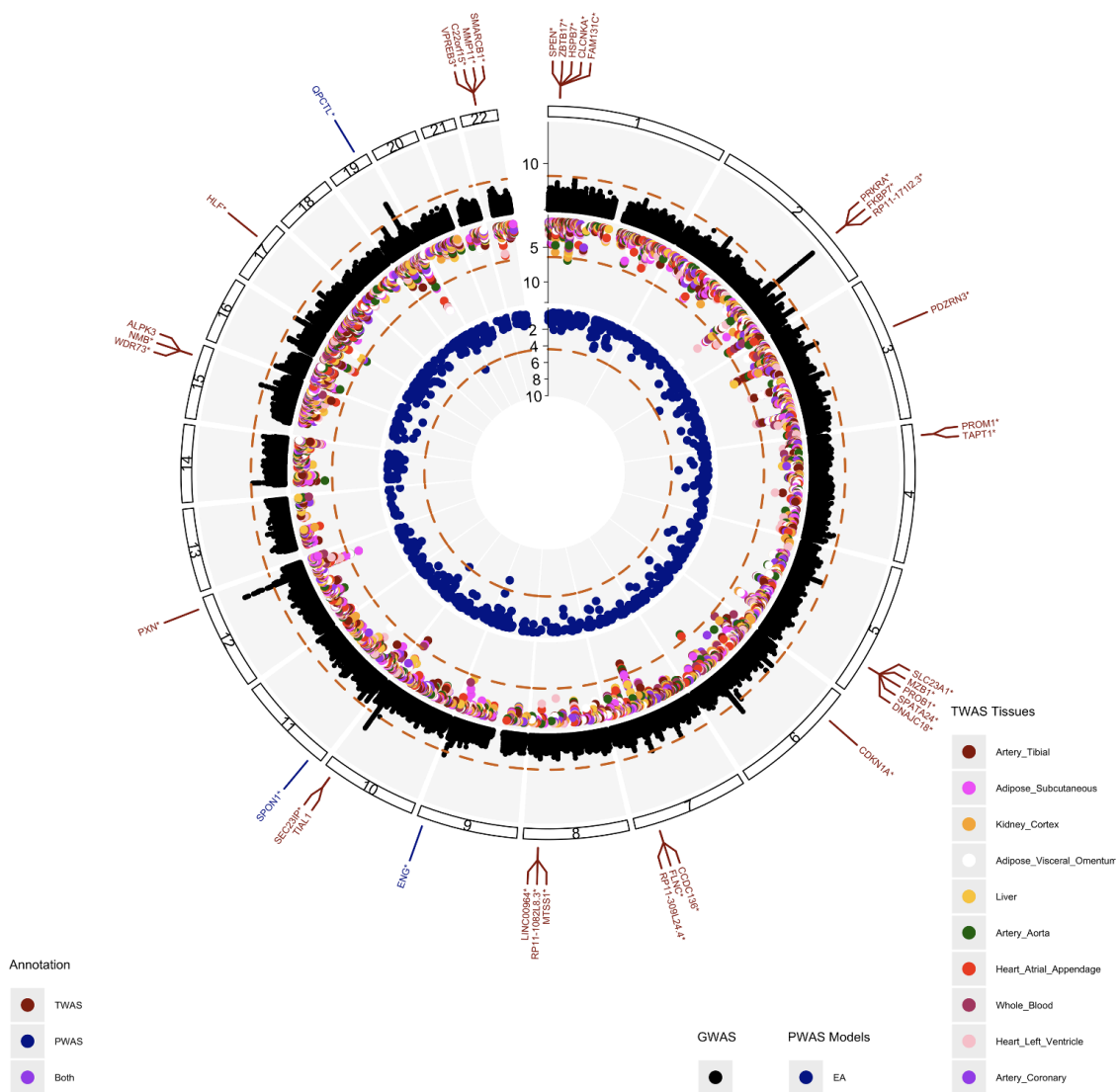
MRI – LV End-Systolic Volume

B



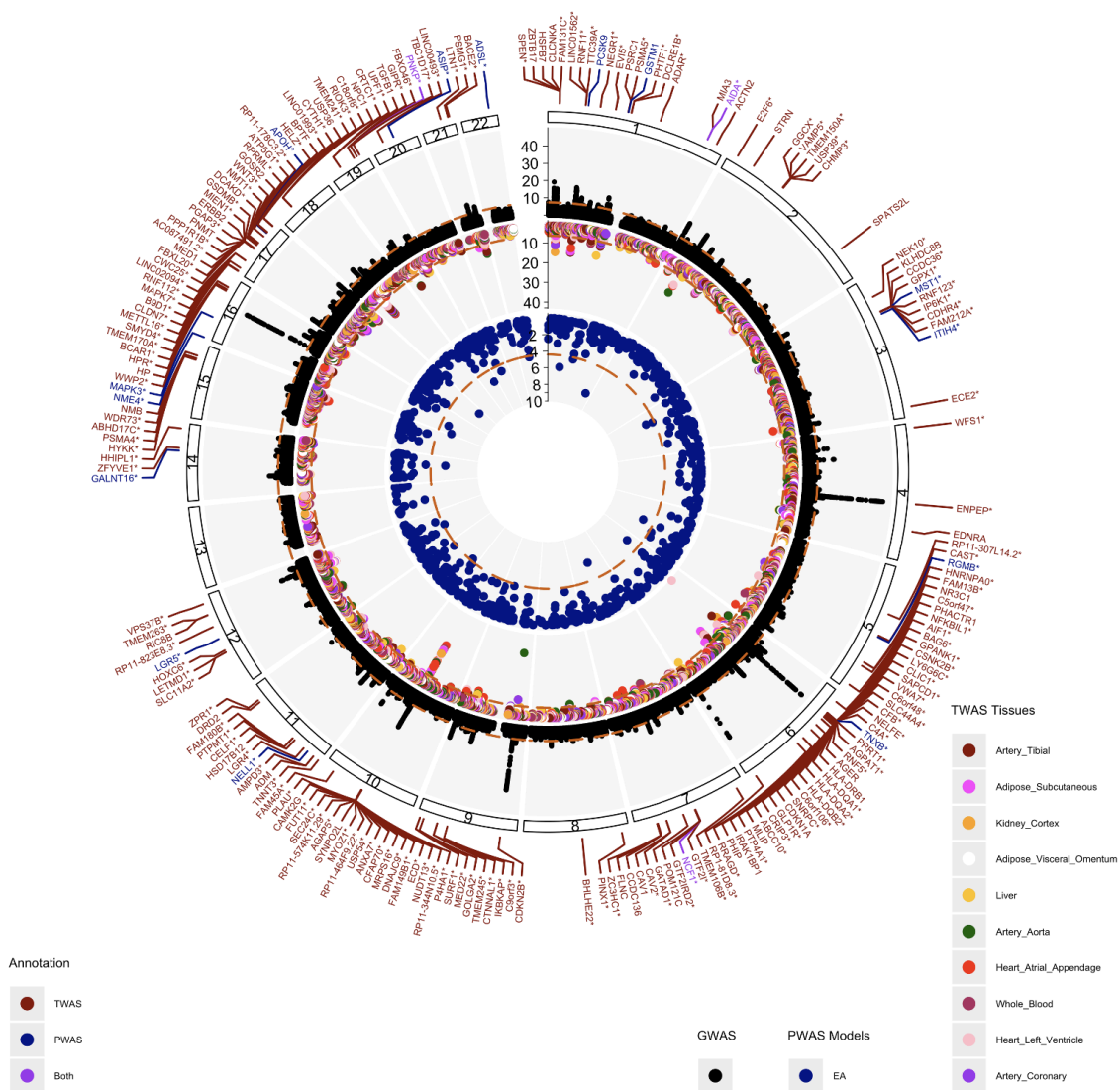
MRI – LV End-Diastolic Volume

C



HF - European

D



Supplemental Figure 1: Circos plots for A) MRI LV Mass, B) MRI LV End-Systolic Volume, C) MRI LV End-Diastolic Volume, and D) HF - European representing identified associations through GWAS (black), TWAS (red), and PWAS (blue).

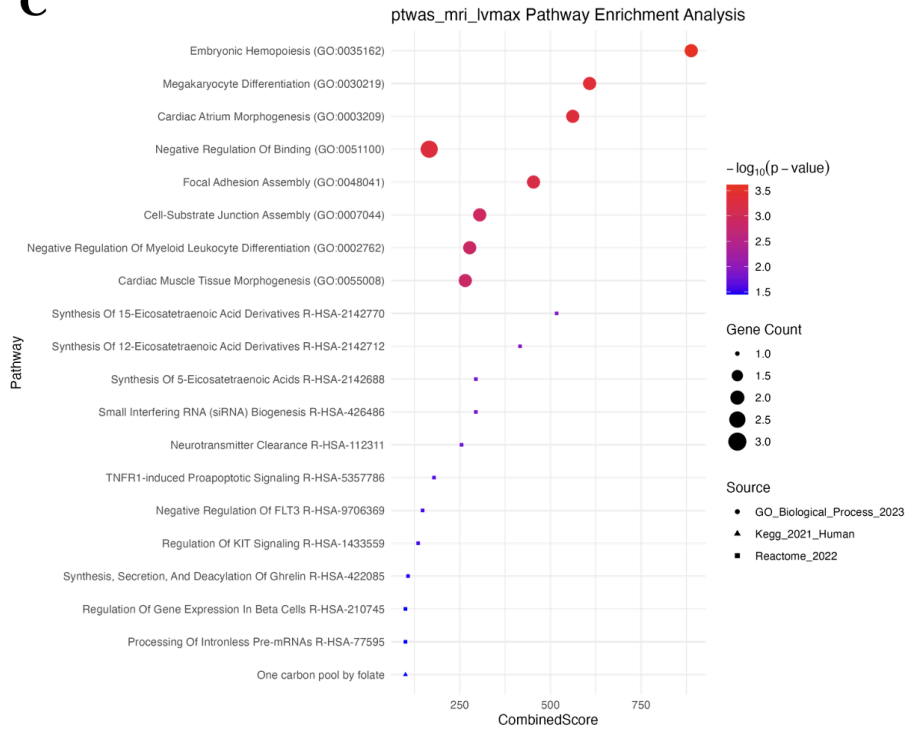
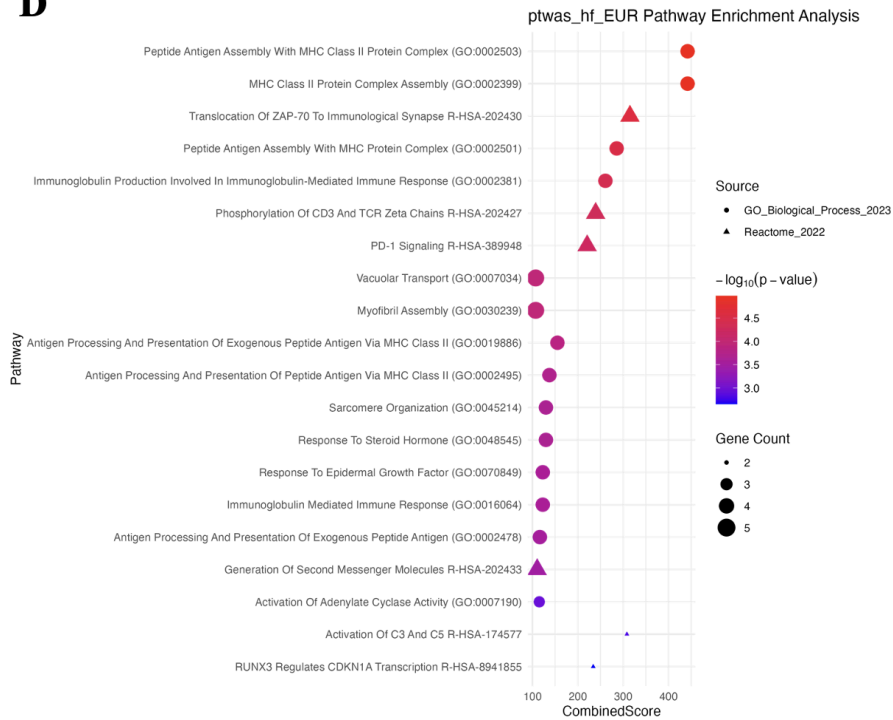
Supplemental Figure 2: Gene-Set Enrichment Results - Additional Phenotypes

A



B



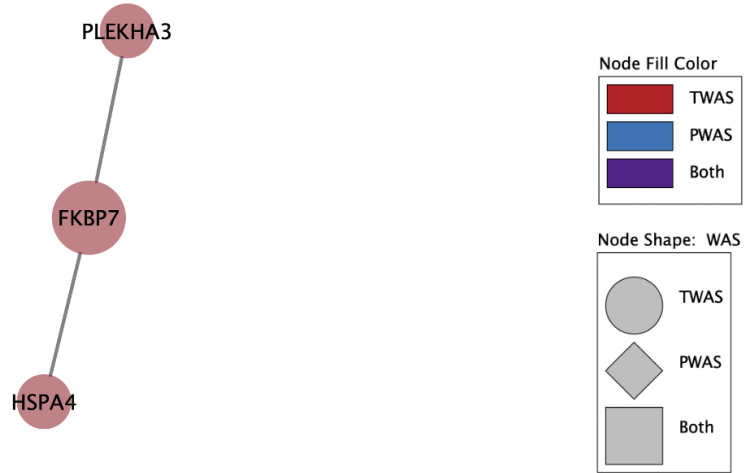
C**D**

Supplemental Figure 2: Gene-set enrichment results of TWAS and PWAS significant hits for A) MRI LV Mass, B) MRI LV End-Systolic Volume, C) MRI LV End-Diastolic Volume, and D) HF - European phenotypes.

Supplemental Figure 3: PPI Networks - Additional Phenotypes

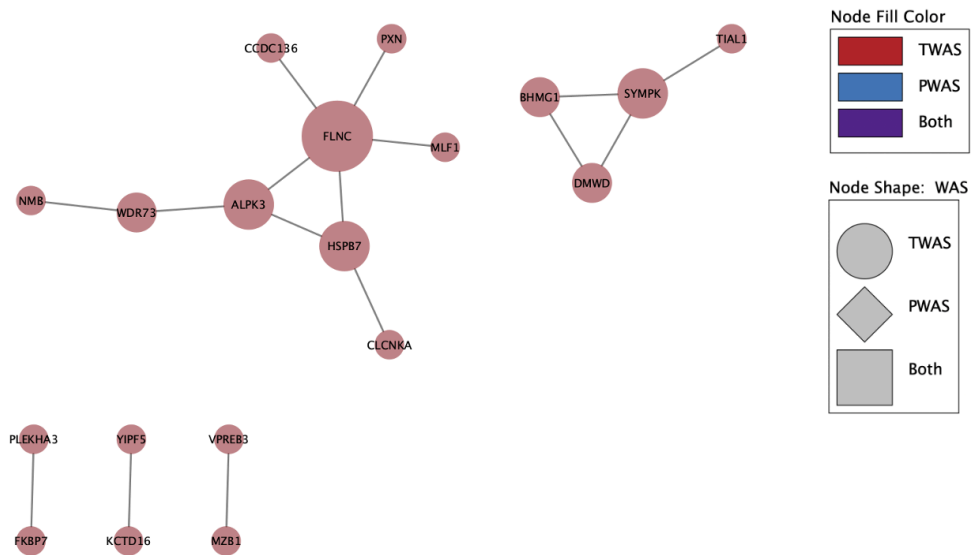
MRI – LV Mass PPI Network

A



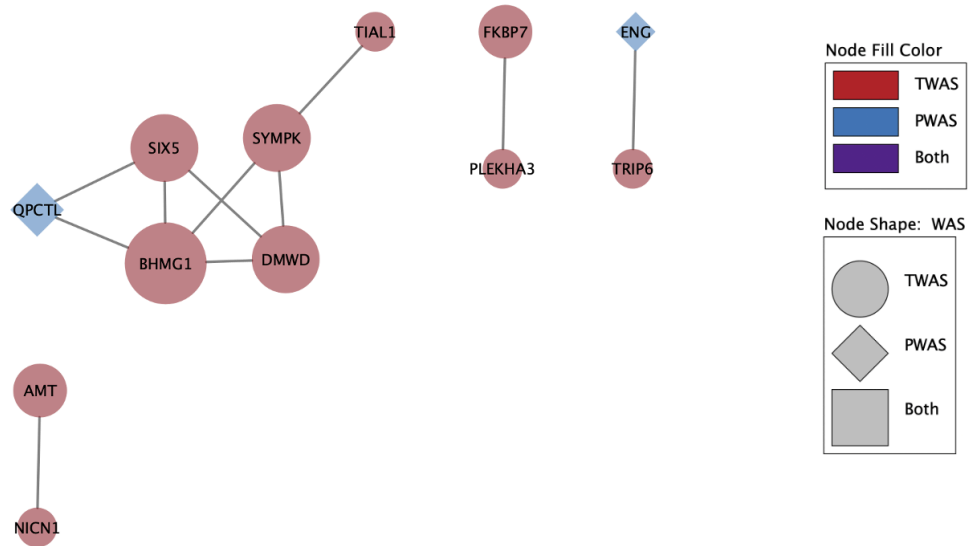
MRI – LVESV PPI Network

B



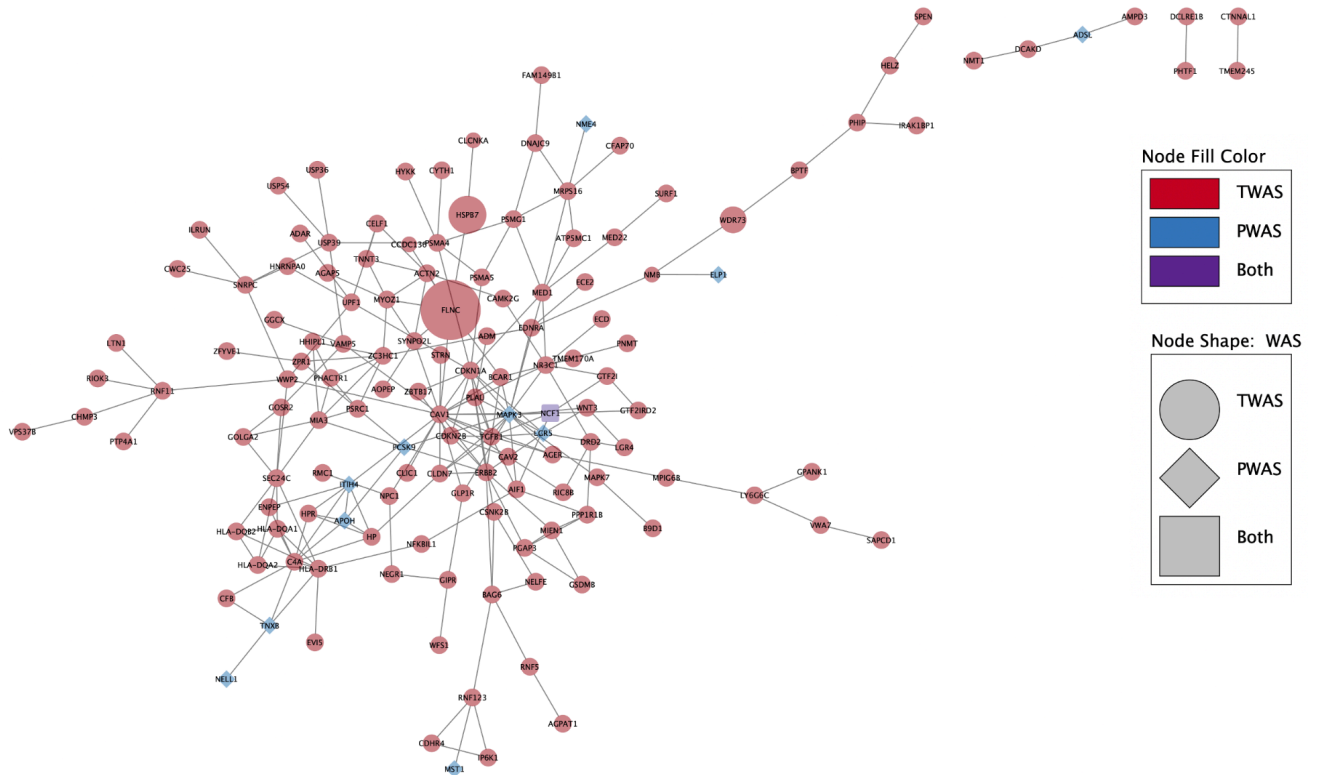
MRI – LVEDV PPI Network

C



HF – EUR PPI Network

D



Supplemental Figure 3: PPI networks constructed using TWAS and PWAS significant hits for A) MRI LV Mass, B) MRI LV End-Systolic Volume, C) MRI LV End-Diastolic Volume, and D) HF - European phenotypes